



PAVEY ARK MINERALS INC.

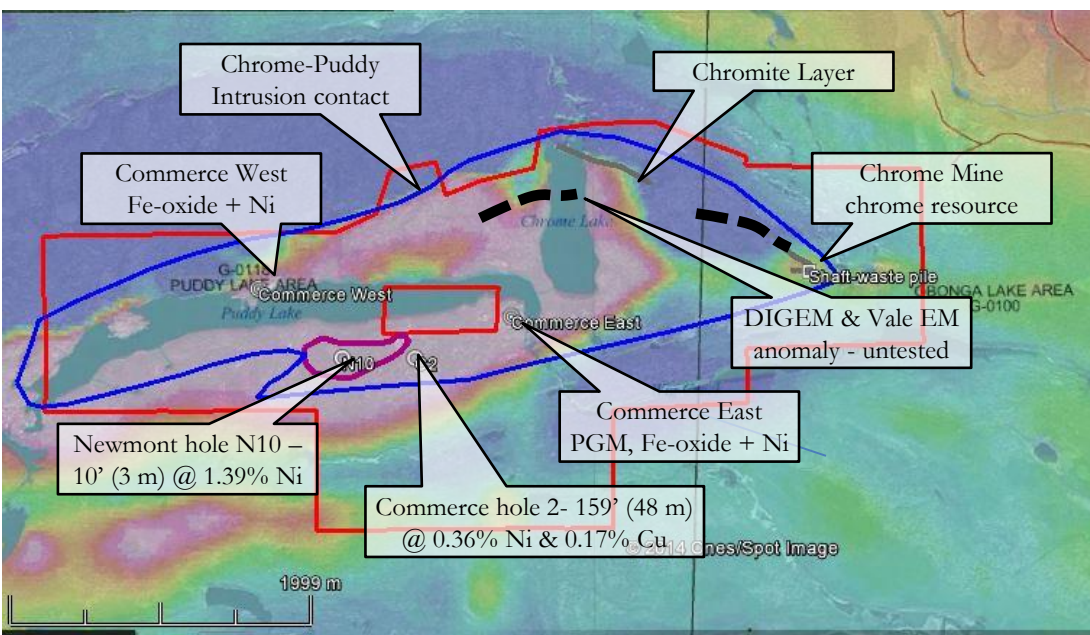
Multi-Commodity Project Generator

Featured Property

Chrome Puddy Ni-PGM, Thunder Bay Area, Ontario

Layered ultramafic intrusion, bulk tonnage Ni-Co-PGM mineralization,
Cu-Ni-PGM sulphide targets, Cr past-producer
90 km north of Implat's Lac des Iles Palladium Mine
Drill ready targets on Patented Mining Claims
\$65,000 OJEP Grant approved for 2022 drilling
Privately held and available for option/sale

Photo: J. Bjorkman, Puddy Lake, 2012



Source: Ontario MNMNDM Claimmaps total field magnetics overlain on Google Earth image 2019

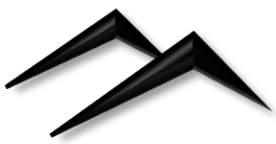


Peridotite with Ni-rich magnetite veins containing PGM, Commerce East

Pavey Ark Minerals is a private Ontario corporation that acquires, validates, and completes resource estimates on advanced exploration projects. We identify resource expansion opportunities on the properties and seek qualified participants to further explore and develop the projects through options, sale or joint ventures.

Contact: info@paveyarkminerals.com Website: www.paveyarkminerals.com

Richard H. Sutcliffe, Ph.D., P.Geo, President and Founder, phone 905-304-4499

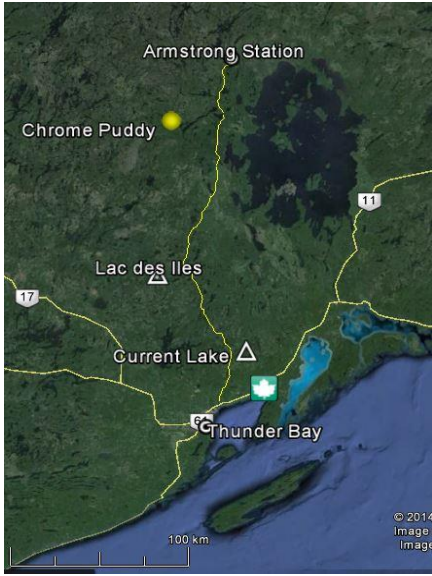


PAVEY ARK MINERALS INC.

Chrome-Puddy Property, Thunder Bay Mining District, Ontario

Layered ultramafic intrusion with bulk tonnage Ni-Co-Fe oxide-PGM mineralization, Cu-Ni-PGM sulphide targets, plus Chromite past-producer

- 1,577 ha Chrome-Puddy Property is 100% owned by Pavey Ark Minerals;
- Located in the **Thunder Bay Mining District, Ontario**, 179 km north of the city Thunder Bay;
- Highway 527 located 27 km west of the Property, with **logging road access** to east boundary;
- **Eleven contiguous patented claims (227 ha)** with surface and mining rights plus **63 contiguous staked claims (1,350 ha)**;
- Property covers over **90% of the Chrome Puddy Ultramafic Intrusion** and includes past-producing Chrome Lake Mine
- **85 km north of Lac des Iles Palladium Mine**
- Located in **Archean Obonga Greenstone Belt**



- Ni-rich magnetite zone with historical drill intersections up to **48 m assaying 0.36% Ni, 0.17% Cu**;
- Grab samples analyzed by Thunder Bay Resident Geologist office report values as high as **5.02% Cu, 2.1% Ni, 0.42 g/t Au, 1.5 g/t Pt and 3.75 g/t Pd**;
- Untested airborne **Dighem**, ground **MaxMin EM and VLF-EM** conductors
- Hosts the past-producing **high-grade Chrome Lake Mine**, the only producer of chromium in Ontario to date;
- Property has **not previously been assembled under single ownership** and eastern part of the intrusion has not been explored since the 1930's.

Pavey Ark Minerals Inc. has compiled the information from historical sources that are believed to be reliable, however, Pavey Ark Minerals Inc. makes no warranty as to the accuracy and reliability of the information presented herein. March 2020.

Our Properties are Flagship Assets for the Companies that acquire them

Chrome Puddy Ni-PGM-Cr
Available for option

Hawkins Gold
Optioned to E2Gold
(TSXV:ETU) drilling in progress

Great Burnt Cu
Sold to Spruce Ridge Res.
(TSXV:SHL) drilling planned

East Bull PGM
Optioned to Cdn Palladium (CSE:BULL)
drilling recently completed

- Available for option/sale/JV
- Recently optioned/sold

Contact: info@paveyarkminerals.com Website: www.paveyarkminerals.com
Richard H. Sutcliffe, Ph.D., P.Geo, President and Founder, phone 905-304-4499